

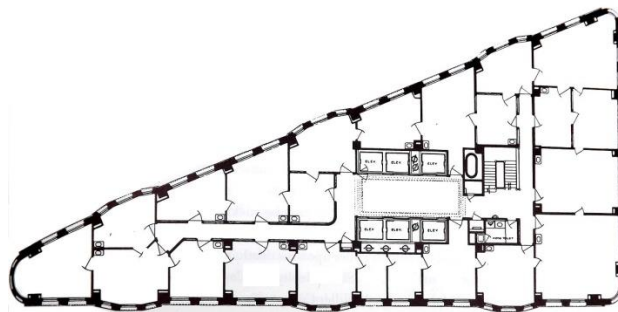
Why It's Important to Field Measure

Stanley Nakamura, AIA (January 2018)

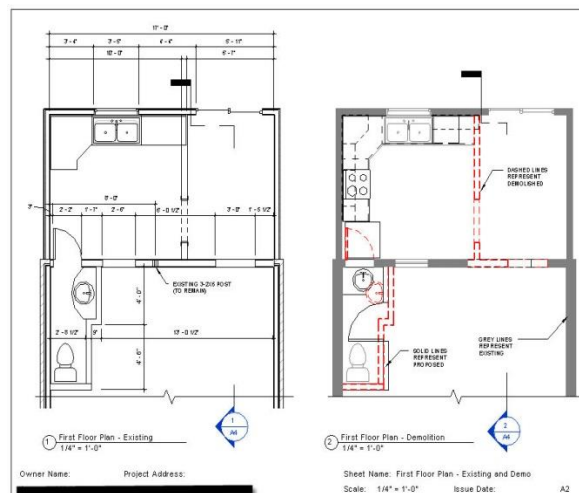
Field Measuring provides the foundation to a Space Plan.



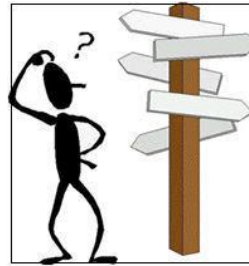
Field Measuring verifies existing perimeter wall and windows, interior walls, doors, millwork, building core elements and column locations.



Field measuring avoids space planning issues when reusing parts of the existing floor plan conditions.



Field Measuring can mitigate any potential hazards or conflicts early in the design process.



Field Measuring can encompass existing wall finish and floor finish for use in the construction documents.

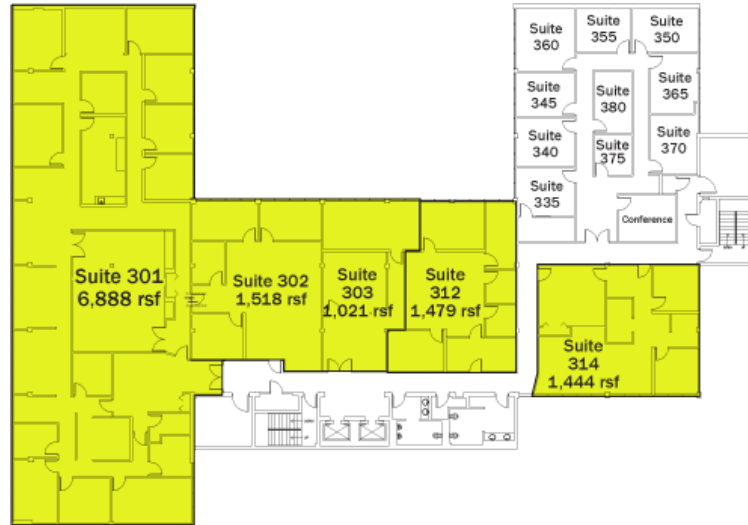


Field measuring can encompass existing Mechanical, Electrical, Plumbing (MEP), and Fire Protection locations.



shutterstock · 151007048

Field Measuring verifies the useable square footage (USF) of the office suite for the Building Owner which can be used to determine the rental square footage (RSF).



For more information

Contact:

Stanley Nakamura

Architect, Commercial Interior Planning

630-417-7155

Stanley@risingsunarchitecture.com

www.risingsunarchitecture.com